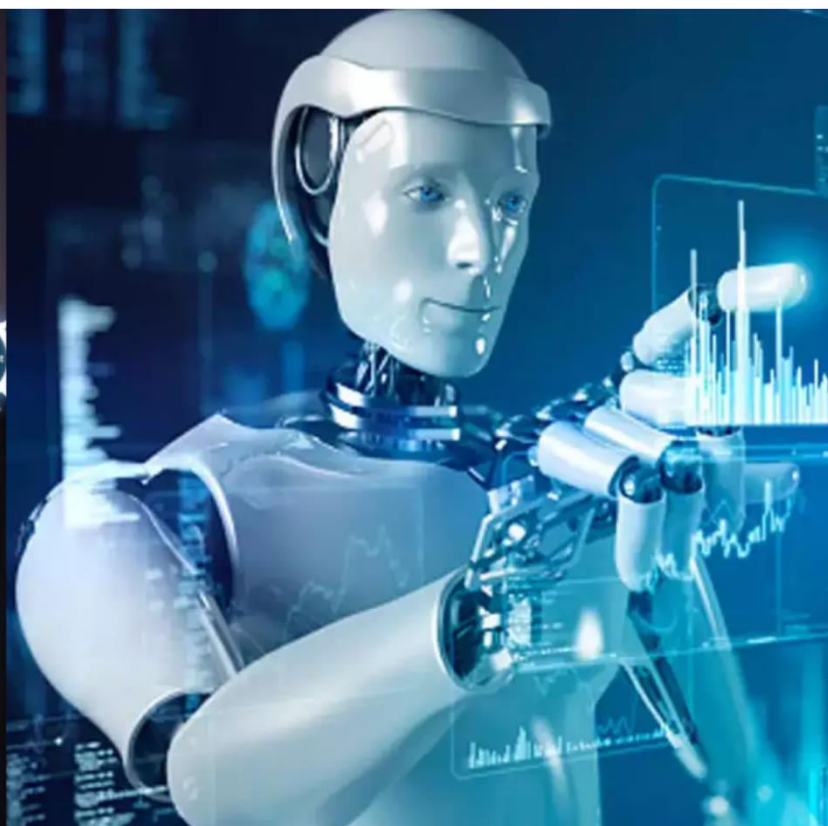




International Journal of Innovative Research in Science Engineering and Technology (IJIRSET)

(A Monthly, Peer Reviewed, Refereed, Scholarly Indexed, Open Access Journal)



Impact Factor: 8.699

Volume 14, Issue 8, August 2025

The Religious and Social Belief of tribals Area (A Study of Udaipur District in Rajasthan)

Dr. Ruchi Solanki

Assistant professor, Department of History (VSY), Government Girls College, Bhim, Rajasthan, India

ABSTRACT: Rajasthan tribals were the original inhabitants of the area now called Rajasthan. Every tribe, small or big, shares common traits. Rajasthan tribals form approximately twelve percent of the total population of Rajasthan. In fact, they were the original inhabitants of the area presently called Rajasthan. The Bhils and the Minas are the principal tribes of Rajasthan, India. Amongst the smaller tribes are Sahariyas, Gaduliya Lohars and the Garasias. In rural areas, tribals are 60.29% of the population. Scheduled Areas in the district include the entire tehsils of Kotra, Jhadol, Lasadiya, Salumbar, Sarada, Kherwara, Rishabhdeo, and Gogunda, and portions of Girwa, Mavli, and Vallabhnagar tehsils.

KEYWORDS: Classification, Religious and Social Factors and Traditions & Cultural Practices

I. INTRODUCTION

Rajasthan is located in the north-western part of India. Its geographical location is between 23° 04' to 30° 11' and 30° 11' North and 69° 30' to 78° 17' East with the tropic of cancer passing through its southernmost tip. Udaipur district (23° 46' to 26° 20' North and 73° 0' East to 74° 35' East) comprises of 11 tehsils (a tehsil is an administrative division within the district), namely, Kotra, Jhadol, Kherwara, Rishabhdev, Sarada, Salumbar, Lasadia, Vallabhnagar, Mavli, Gogunda, and Girva. Among these, six tehsils (Gogunda, Salumbar, Kotra, Jhadol, Girva, and Kherwada) are rich in tribal population, and therefore, these were the focus of the study.

Total of 8 districts have either full or partial area declared as part of Schedule V areas. Fully Tribal Districts: Banswara, Dungarpur, Pratapgarh. Partly Tribal Areas: Udaipur, Rajsamand, Chittorgarh, Sirohi, Pali. TAD department was established for the upliftment of these tribal people and to eradicate their backwardness under the Article 46 of the constitution of India. The Tribal Area Development departments head office is situated at Udaipur. The Bhil are one of the largest tribal groups, living in Chhattisgarh, Gujarat, Karnataka, Madhya Pradesh, Maharashtra, Andhra Pradesh and Rajasthan. The name is derived from the word 'billu', which means bow. The Bhil are known to be excellent archers coupled with deep knowledge about their local geography.

The tribal population in Rajasthan is concentrated in belts running from Sirohi through the Udaipur, Dungarpur, Chittorgarh and Banswara districts to the Bundi, Kota, Sawai, Madhopur, Tonk and Jaipur districts. Religious beliefs and practices have long influenced human perceptions and uses of nature. Animals in particular play a prominent role in magico-religious practices and provide historical and cultural depth of these relationships. Understanding human-faunal relations is often fundamental to the cause of meaningful wildlife conservation.

The tribal people maintain strong ties with animals at both the material and spiritual level. Study reveals that traditional people depend on local therapies either magico-religious or natural ones in absence of awareness, modern medical facilities, expensive drugs, and poor transportation. However, the use of animal material in such practices is on a decline.

II. CLASSIFICATION OF TRIBE

Bhils

Bhils, the principal tribe of Rajasthan, comprise approximately 39% of the total tribal population in Rajasthan. Banswara area is dominated by this tribal group. They were believed to be fine archers and some Bhil bowmen found a mention in the Ramayana and the Mahabharata. In order to maintain their number, the Bhils mingled with the Rajputs. A number of Bhils gather at the Baneshwar festival held in Dungarpur. They rejoice by singing and dancing at the festival. Yet another festive time for Bhils is Holi. Superstition is deep rooted in the Bhil culture.

Minas

Minas, the second largest tribe in Rajasthan, dominate the area of Shekhawati and other eastern parts of Rajasthan. They originally resided at the Indus Valley civilization. Minas have tall and athletic built and sharp features including large eyes, light brown complexion and thick lips. Alike the Bhils, the literacy rate amongst the Minas is low. They are married in quite young years.

Gadiya Lohars

Originally a martial tribe, Gadiya Lohars derived their name from the attractive bullock carts popularly called gadis. Nowadays, they are nomadic blacksmiths. They left their homeland after Maharana Pratap was ousted from Chittorgarh by Emperor Akbar.

Garasias

Garasias, small Rajput tribe resides along the Abu Road area in southern Rajasthan. Marriage through elopement is an interesting custom followed by this tribal group.

Sahariyas

Sahariyas, the jungle dwellers, are found in Kota, Dungarpur and Sawai Madhopur areas of southern Rajasthan. Thought to be of Bhil origin, they are considered the most backward tribe in Rajasthan. Hunting and fishing are the main sources of earning a livelihood.

Damors

Damors, chiefly, cultivators and manual laborers migrated from Gujarat to Rajasthan and settled in the Udaipur and Dungarpur districts.

III. RELIGIOUS AND SOCIAL BELIEF**Animals occupy**

an important position in culture and religion of traditional societies all over the world. In this context, many of the useful animals are given sacred status because of their important roles in human culture and religion. Examples could be cited of various domestic cow species which are worshipped by the traditional Hindu societies on a regular basis in recognition of their values to mankind. Not only this, even products such as excreta and urine of these animals are smeared on the floor areas of their houses with a belief that these products would sanctify their dwelling.

Similarly, certain body parts such as the horn, hide, tail, and feathers of some other species of animals are used in their religious rituals as well. Traditional societies use a number of animals in their magico-religious sphere. Normally, animal parts and products such as the exoskeleton, bone, and glandular secretions are used as sprays, pendants, and amulets to ward off the perceived evil spirits. In many places,

Colourful and Ornamental

Colourful attires dominate the land. The bright costumes and attires of the Rajasthanis present a complete contrast to the barren, colourless landscape and the monotony of its cloudless sky. Irrespective of the caste, each person has a distinct preference for bright costumes. Whether a rural folk or a Raja, attires in bright red, brilliant yellow or lively green are preferred by one and all. A sparkling gold or silver zari highlight lends the perfect finish.

Rajasthani women love to wear jewelry in silver. The age-old designs characteristic of a specific tribe, reflect in the ornaments. Normal ornaments of neck, nose, ear and hand are worn by Rajasthani women on daily basis, but on special occasions and social gatherings several additional ornaments are worn to look even more beautiful. Exquisite designs of the jewelry and ornaments of Rajasthan has made them popular not only amongst the women of India but also amongst the women of the foreign countries.

Impressive Turbans

Turbans, popularly known as pagdi, vary with varying religion and region. The Rajput turbans are completely different from the Sikh and the Arab turbans. Not only cuisine, water and dialect but turbans also change within every 12 miles in Rajasthan. As a matter of fact, there are almost 1,000 different styles of wearing turbans. Each style of the turban

highlights the region, caste and class of the individual. Brightly coloured turbans are preferred by the residents. Special turbans are worn on special occasions.

IV. A LINEAGE OF GRACEFUL WOMEN

The womenfolk of Rajasthan are identified for their beauty and grace. Maharani Padmini Devi of Chittaurgarh is the perfect example of a beauteous beauty of Rajasthan. Yet another beauty, Maharani Gayatri Devi, the present day 'Rajmata of Jaipur', was listed amongst the ten most beautiful women in the whole world. Her charm has not diminished till date...

Tribals fast losing traditions & cultural practices

The rapid pace of urbanisation in tribal-dominated districts of the state is leading to a fast decline in traditions and cultural practices. Tribals constitute about 13.5% of the total population in the state while the national average was 8.5% as per the Census 2011. The notification of scheduled areas from 1950 with an aim of protecting their culture and development has not yet yielded desired results.

Over the years, it has been noticed that their reliance has increased manifold on outer space. "They usually grow local crops which provide food-cum-fodder for them and their livestock, respectively. Since the government is not providing them subsidy on crops which they grow like millets they are shunning the crops for rice, wheat and soybean," said Jayesh Joshi, secretary of Vaghdahar, an NGO working for the uplift of tribals in the state.

The less development in the tribal region has seen a massive rate of migration which has completely changed the family/social system of the subgroups. "The tribals follow a unique social system called 'Halma' in which the entire lineage lives in close harmony providing social and financial security to each other. In the past three decades, massive industrial growth in Gujarat and Maharashtra added with poverty has forced tribal youths to migrate leaving fewer men in the families. It has disunited the harmony and killed the spirit of collective practices like fairs, festivals, marriages and deaths," said Rashmi Jain, head of department sociology, Rajasthan University.

Rajasthan is a princely state and has many tribes such as Bhils and Minas. These are the tribes which have dominated in major parts of Rajasthan apart from small tribes existed in the state. Like the other tribes of India, each of the Rajasthan tribes known to have different costumes, jewelry, fairs, and festivals.

V. PRESENT SITUATION IN RAJASTHAN AREA

Rajasthan is basically a rural state where a huge amount of people depends on the agricultural activities. Although the share of the agriculture is decreasing in NSDP, but we cannot ignore its importance for providing the livelihood to large part of the population of the state. The physiography of the state is very much typical. About 61 percent area of the state falls under the desert area where monsoon always fails and the facilities of irrigation are at very low level.

Therefore, the possibilities of agriculture are in vain and people always migrate in the search of employment in neighbouring states or in countries. Rajasthan is mainly divided into seven divisions namely Udaipur, Ajmer, Jaipur, Kota, Jodhpur, Bharatpur and Bikaner. Present study is based on the job prospects of Udaipur division. There are six districts in Udaipur division namely Udaipur, Dungarpur, Banswara, Chittorgarh, Rajsamand and Pratapgarh. These districts are well known for their tribal background, where almost two third part of the population is tribal. Tribal people are mainly dependent on the agricultural and allied activities in which too much skill is not required, only human labour is essential in such activities. Therefore, the tribal rural people are suitable for such unskilled activities like subsistence agriculture and animal husbandry etc.

Almost all the populations of these tribal areas are engaged in the agriculture and allied activities where skills are not essential to work, so the productivity of the labour is not high. It is also a very important fact that the agriculture does not provide sufficient employment opportunities to the people. Therefore, in search of the employment, tribal people migrate in other areas. If these tribal people get the training of skills then they can get better opportunities of the employment. These skillful people can better contribute in the development of the country.

Thus, it is very important to study the areas where the tribal people required skillful training which will make them skillful to contribute in the development of the country. Present study will show the thrust areas where skill development is needed and hence productivity can be improved. The topic of skill development has very much interdisciplinary relevance as it falls under the area of human resource development. In India, where the size of population is very large a huge number of people are not significantly contributing in the

VI. CONCLUSION

The Present Study Related Discuss tribe cultural and education in Rajasthan specially in Udaipur. The general well-being. Indigenous people of the Udaipur district have the belief that diseases originate due to supernatural forces and they seek treatment through magico-religious practices. On the direction of Bhopas, the tribals offer prayers and sacrifices to appease the supernatural power, which may be responsible for the disease. The study reveals that traditional people depend on local therapies either magico-religious or natural due to the lack of awareness, modern medical facilities, expensive drugs, and poor transportation.

REFERENCES

1. Alves RRN, Rosa IL. From cnidarians to mammals: the use of animals as remedies in fishing communities in NE Brazil. *J Ethnopharmacol.* 2006;107:259–276.
2. Brief Industrial Profile of Udaipur District" (PDF). *Dcmsme.gov.in*. Government of India - Ministry of MSME. Retrieved 21 July 2015
3. Borang A. Studies on certain ethno zoological aspects of Adi tribes of Siang District, AP India. *Arunachal Forest News.* 1996;14:1–5.
4. Badgaon bani tehsil". *Udaipur News.* 18 June 2012. Retrieved 18 April 2019
5. District at a Glance, Udaipur District" (PDF). *Udaipur: Office of Deputy Director Economic and Statistics.* 2016
6. Ground Water Scenario, Udaipur District, Rajasthan (PDF). *Jaipur: Central Ground Water Board.* 2013
7. Florczak KL. An exploration of the concept of sacrifice. *Nursing Science Quarterly.* 2004;17:195–200.
8. Lohani U. Traditional uses of animals among Jirels of Central Nepal. *Ethno Med.* 2011;5(2):115–124.
9. Mahawar MM, Jaroli DP. Traditional zootherapeutic studies in India: a review. *J Ethnobiol Ethnomed.* 2008;4:1–12.
10. Pant HM, Pant N. Magico-religious therapies of the Rath Region of Garwhal Himalaya. *Reportand Opinion.* 2012;4:14–16.
11. Ramakrishnan PS. Conserving the sacred. Ecological and policy implications. In: Kothari A, editor. *Communities and conservation.* New Delhi: Sage Publications; 1998.
12. Solanki GS, Chutia P. Ethnozoological and sociocultural aspects of Monpas of Arunachal Pradesh. *J Hum Ecol* 2004; 15: 251-254
13. TSP mein jude Udaipur ke 342 gaon, pahle 1612 the, ab 1954 hue". *Dainik Bhaskar.* 12 July 2018. Retrieved 20 April 2019
14. https://m.timesofindia.com/city/jaipur/tribals-fast-losing-traditions-cultural-practices/amp_articleshow/85162167.cms
15. <http://www.rajasthanexplored.com/rajasthan-tourism/people-tribes.html>
16. <https://www.rajras.in/rajasthan/tribes/>
17. <https://www.tribesindia.in/rajasthan-tribes.php>
18. <http://www.bharatonline.com/rajasthan/rajasthan-culture/tribes.html>



INTERNATIONAL
STANDARD
SERIAL
NUMBER
INDIA



INTERNATIONAL JOURNAL OF INNOVATIVE RESEARCH

IN SCIENCE | ENGINEERING | TECHNOLOGY

 9940 572 462  6381 907 438  ijirset@gmail.com



www.ijirset.com

Scan to save the contact details